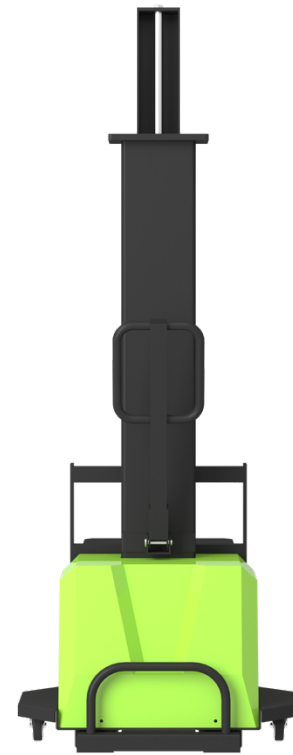
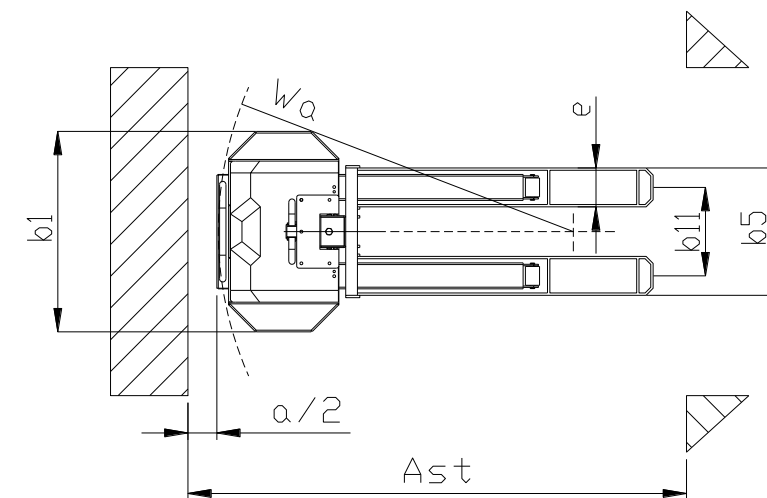
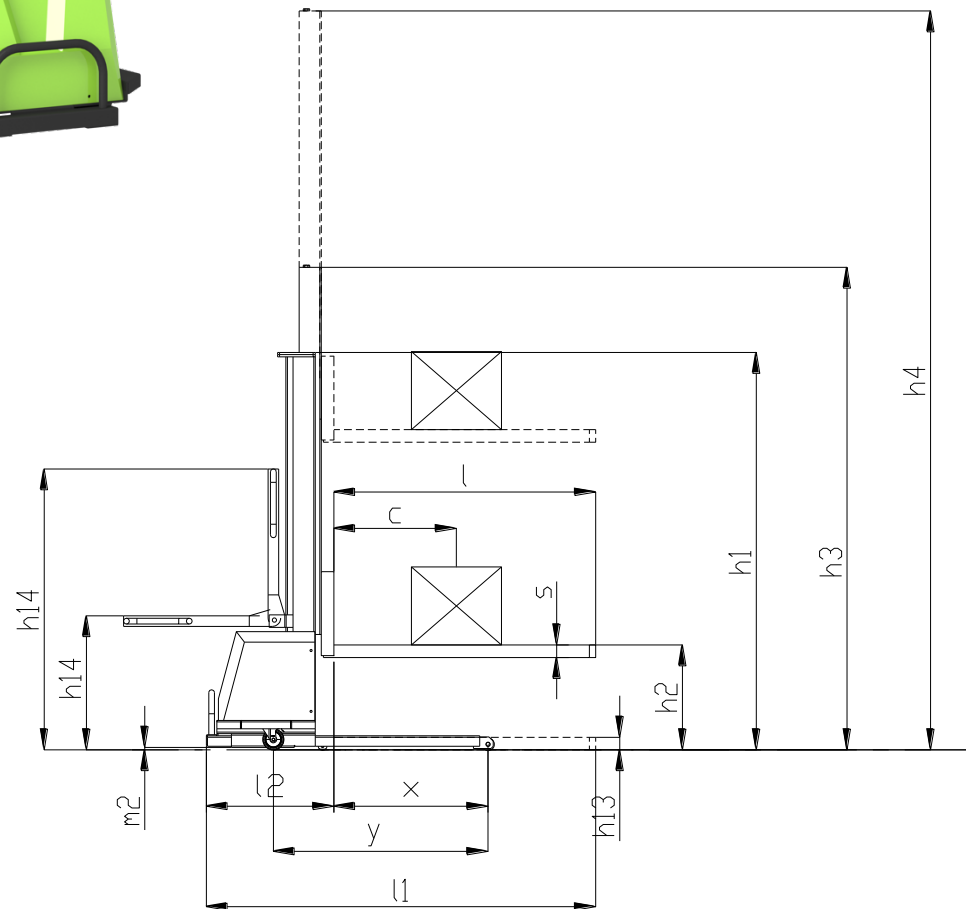


Model: V-Stacker-S1 Series



V-Stacker-S1



Model		V-Stacker-S1-0.5T	V-Stacker-S1-1T
Load capacity	Q(kg)	500	1000
Load centre distance	C(mm)	585	585
Load distance, centre of drive axle to fork	X(mm)	735	735
Height, lowered	h_{13} (mm)	60	60
Tyre size, front		Φ60x80	Φ60x80
Tyre size rear		Φ100x40	Φ100x40
Additional whells (dimensions)		Φ40x30	Φ40x30
Wheels, number front rear (x=driven wheels)		2x2	2x2
Height, mast lowered	h_1 (mm)	1895	1895
Max. lift height	h_3(mm)	1500	1500
Height, mast extended	h_4 (mm)	3300	3300
Height of tiller in drive position min./max.	h_{14} (mm)	640/1340	640/1340
Overall length	l_1 (mm)	1780	1780
Length to face of forks	l_2 (mm)	610	610
Overall with	b_1 (mm)	850	850
Fork dimensions	s/e/l(mm)	60/165/1170	60/175/1170
With overall forks	b_5 (mm)	540	550
Ground clearance, centre of wheelbase	m_2 (mm)	12	12
Aisle width for pallets 1219x1219 crossways	A_{st} (mm)	2200	2200
Aisle width for pallets 800x1200 lengthways		2130	2130
Turning radius	W_a (mm)	1090	1090
Lift speed, laden/unladen	m/s	0.05/0.05	0.05/0.05
Service brake		Mechanical	Mechanical
Battery voltage, nominal capacity K_5	V/Ah	12/40	12/50
Battery weight	Kg	17	20
Battery dimensions l/w/h	mm	2x(258x171x199)	2x(258x171x199)
Lifting Motor	kW	0.5	1.2
Service weight (with battery)	kg	260	300